

CSR
Environmental Report
2015



JFE Plastic Resource Corporation

◇ Report Period

April 1, 2014 - March 31, 2015

Includes some continuing/recent activities.

Contents

- 1 Message from the President
- 2 Company Profile

Management

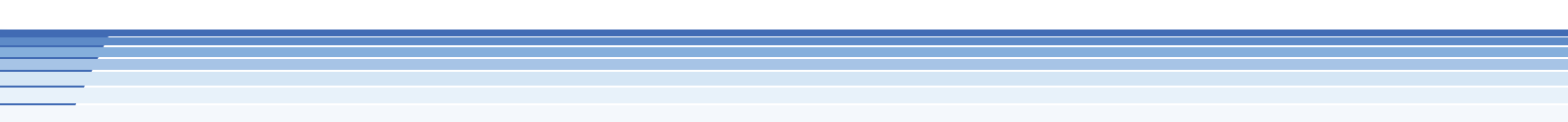
- 5 Corporate Vision, Corporate Values, and Action Guidelines
- 6 Corporate Management
- 8 Environmental Management
- 11 Safety and Health Management

Social Activities

- 13 With Customers and Business Partners
- 15 With Regional Society
- 16 Cooperation with Governmental and
Administrative Agencies
- 20 External Evaluation
- 22 With Employees: Safety and Health Activities
- 24 With Employees: Creating a Safe Environment

Environmental Activities

- 29 Environmental Management Efforts
- 30 Environmental Communication
- 31 Environment-Friendly
Products/Services
- 34 Reduction of Environmental Loads



■ Message from the President

Contributing to
Building a Recycling-Oriented Society

Nozomu Tamura
President



JFE Plastic Resource Corporation succeeded to the "container and packaging plastics recycling business" of JFE Kankyo Corporation following the separation of those operations in July 2009. Since then, we have worked to build a recycling-oriented society through our plastic recycling businesses, including use of plastics in blast furnaces and coke ovens and material recycling.

We have realized "Promotion of waste plastic recycling and CO₂ reduction" by material recycling utilizing NF Board®, and "Reduction of fossil fuels," etc. by further recycling of used NF Board® products. As an environment-friendly company, we put great effort into increasing the "visibility of recycling" among the general public and promoting various types of recycling.

Since environmental preservation is the basis of our business, our aim is to be a top-level environment-conscious company by continuously developing environmental management activities with the participation of all employees in order to absolutely minimize environmental loads accompanying our own business activities.

As a company that realizes rewarding work by empowering the production site, we intend to strive to create a company with "originality, a spirit of challenge and creativity" based on the unity of all employees in a common consensus.

In closing, I would like to request the further support and patronage of all our customers and friends.

President and Representative Director
Nozomu Tamura

Company Profile

Company name JFE Plastic Resource Corporation

Representative Nozomu Tamura, President and Representative Director
(Effective April 2015)

Advisor: Hirohisa Hotta

Directors Katsunori Suzuki, Mototatsu Sugizawa, Mamoru Suda, Iwao Okochi
Auditor: Kazuhiko Imai

Established Established November 2005, registered March 2009
(revision of Articles of Incorporation, change of company name)

Capitalization ¥ 90 million

Sales volume ¥ 3 billion (approx.)

Employees 70 (approx.)

Address

Head office: 5-1 Mizuecho, Kawasaki-ku, Kawasaki 210-0866, Japan
TEL +81-44-299-5193 FAX +81-44-299-5328

Keihin Division: Same as above.

Fukuyama Division: 113 Minookicho, Fukuyama, Hiroshima Pref., 721-0956, Japan
TEL +81-84-981-3160 FAX +81-84-981-3170

URL <http://www.jfe-plr.co.jp/>

Lines of Business Resource recovery and recycling of general wastes
Sale of technology/equipment and recycled plastic products
related to the above-mentioned business

History April 2000 Start of operation of Mizue Recycling Plant
(treatment capacity: 185t/d)
Start of operation of Fukuyama Recycling Plant
(treatment capacity: 200t/d)
September 2002 Start of operation of NF Board Plant
July 2009 Succeeded to container and packaging recycling business of JFE
Kankyo Corporation
All shares acquired by JFE Steel Corporation (became a
wholly-owned subsidiary of JFE Steel)

Keihin Division
Mizue Recycling Plant



NF Board Plant



Fukuyama Division
Fukuyama Recycling Plant





■ Management

Corporate Vision, Corporate Values, and Action Guidelines

Corporate Vision

"JFE Plastic Resource Corporation - Contributes to the construction of a society in harmony with the environment."

Corporate Values

"A Challenging Spirit, Flexibility and Sincerity"

Action Guideline

All executives and employees of JFE Plastic Resource Corporation will faithfully adhere to the following Action Guideline in all practice of corporate activities. These standards were created to embody the Corporate Vision of JFE Plastic Resource Corporation and conform to its Corporate Values.

Senior executives are to take the lead in communicating these standards within the company, and in creating effective systems and mechanisms to ensure adherence to corporate ethical standards.

Senior executives shall be directly involved both in the resolution and implementation of measures to prevent the recurrence of any violations of these standards. They shall disclose information about violations in a timely manner, shall clarify the authority and accountability involved and shall deal rigorously with offenses.

1. Provide quality products and services

Earn the trust and regard of customers by endeavoring to provide safe, high-quality products and services based on superior technology, and by fully respecting the privacy of personal and customer information.

2. Be open to society at large

Endeavor to communicate with shareholders and the broader community, and actively disclose corporate information.

3. Coordinate and cooperate with the community

Actively contribute to the community as a good corporate citizen in a spirit of coordination and cooperation.

4. Globalize

Endeavor to achieve mutual understanding with people around the world, working from a global perspective and with respect for international norms, and also local cultures and customs.

5. Harmonious existence with the global environment

Actively work to achieve better living standards and the advancement of societies, as well as harmonious existence with the global environment.

6. Maintain proper relations with government and political authorities

Endeavor to build and maintain sound and proper relationships with government and political authorities.

7. Respond appropriately to anti-social elements

Firmly resist all elements and organizations that threaten social order and stability, and refuse all illegal and improper demands.

8. Respect human rights

Respect all employees and members of the general public as individuals and refrain from any and all discrimination in corporate activities.

9. Provide challenging work environments

Provide employees with attractive, safe and challenging work environments.

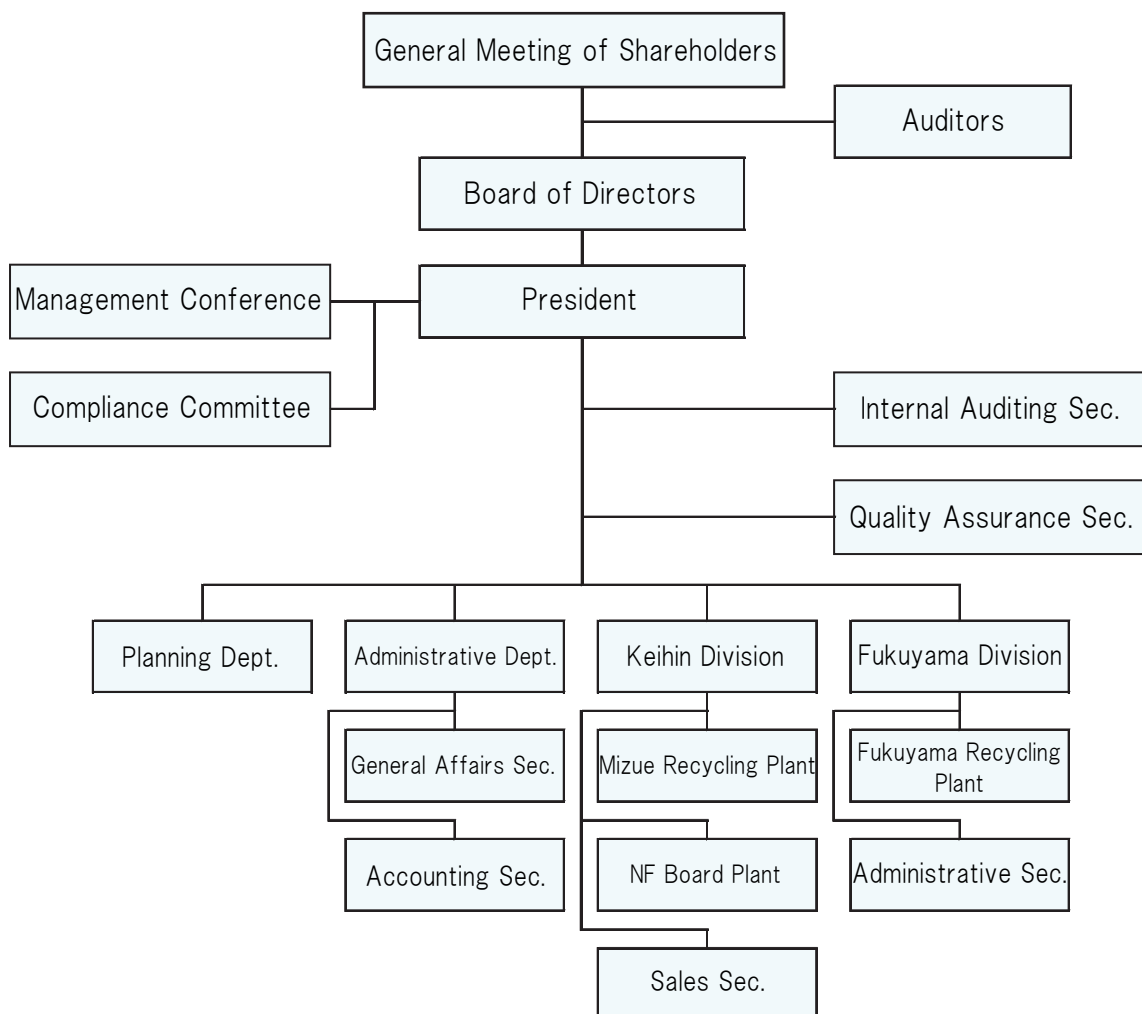
10. Comply with laws and ordinances

Comply with all applicable laws and ordinances, endeavor to compete fairly and freely, refrain from illegal business activities, promote sound business practices and be faithful and sincere in all activities and dealings.

Corporate Management

Management System

JFE Plastic Resource Corporation endeavors to strengthen its competitiveness and expand its profit-generating capabilities by creating a streamlined management system and conducting its businesses efficiently.



Internal Controls

JFE Plastic Resource Corporation has created a system of internal controls by establishing rules for meetings, such as rules for meetings of the Board of Directors and Management Conferences, as well as organizational and business rules and setting up a Corporate Ethics Hotline. In order to continuously increase corporate value, the Company periodically confirms the status of implementation/operation and endeavors to improve those systems.

In business processes such as the contract management, environmental management, compliance (observance of laws and ordinances), etc., the Company carries out regular self-checks and conducts audits by the Internal Auditing Sec.

■ CSR Management

JFE Plastic Resource Corporation is aware of its corporate responsibility as a member of society and is strengthening its efforts to fulfill its Corporate Social Responsibility (CSR) toward the creation of a better society.

➤ Thoroughgoing implementation of compliance

JFE Plastic Resource Corporation positions "compliance (observance of laws and ordinances)," which is the foundation of CSR, as one of the most important issues for management. The Company holds meetings of its Compliance Committee under the leadership of the President, conducts the following reviews and exchanges of information and implements various policies.

- Review and decision of basic compliance policies
- Study of compliance-related issues and implementation of countermeasures
- Introduction of compliance items and thoroughgoing communication in the Company

➤ Operation of Corporate Ethics Hotline

The "Corporate Ethics Hotline" was established to enable quick, accurate communication of important information in connection with compliance from the site to top management (President). In the operation of the Hotline, rules have been established to protect information and persons consulting the Hotline.

■ Risk Management

JFE Plastic Resource Corporation has implemented risk management to prevent all types of risk which may affect its business and ensure business continuity in case an emergency situation occurs.

Risks involving the business of the Company as a whole are supervised and managed centering on the Internal Audit Group. The Company also collects and analyzes information, etc. in order to respond to increasingly diverse social movements.

Risks related to production business at each plant are identified and assessed, countermeasures are studied and the status of implementation is controlled. Important risks are reviewed annually and key tasks are set for each fiscal year with the aim of achieving continuous improvement. Integrated company-wide risk management is promoted by information exchanges and information sharing between plants.

In order to respond to large-scale disasters, the Company has created a system for confirming the safety of employees, stockpiled necessary items and prepared a list of key continuing activities for business continuity, and is strengthening related countermeasures.

Environmental Management

Basic Policy and Action Guidelines

Because the business of JFE Plastic Resource Corporation involves recycling of container and packaging plastics, its business contributes directly to the formation of recycling-based society. The Company is grappling with environmental management particularly from this viewpoint. The Company has established the following Basic Policy and Action Guidelines with the aim of being a top-level environment-friendly company.

Basic Policy

JFE Plastic Resource Corporation contributes to the realization of a recycling-based society through its container and packaging plastics recycling business. Based on an awareness of the importance of environmental protection, the Company has introduced an Environmental Management System (EMS), ensures that all employees know and understand its Environmental Policy and engages in concerted, company-wide proactive environmental protection activities in order to absolutely minimize environmental loads accompanying its business activities.

Action Guidelines

- (1) Observe all applicable related laws, ordinance and regulations.
- (2) Implement, maintain and continuously improve an Environmental Management System.
- (3) Concretely, work to achieve the following items:
 - 1) Reduction of CO₂ emissions by promoting energy saving and recycling of plastics.
 - 2) Resource saving by reducing consumption of industrial water, etc.
 - 3) Reduction of industrial wastes by increasing the recycling ratio, etc.
 - 4) Active efforts for regional environmental education through accepting plant tours, participation in environmental exhibitions, etc.
 - 5) Promotion of Green Procurement

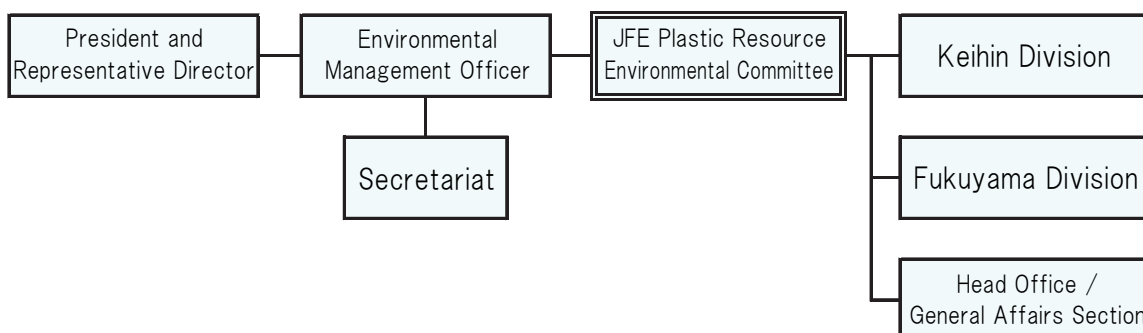
Nozomu Tamura, Representative Director and President
JFE Plastic Resource Corporation

■ Environmental Management System

JFE Plastic Resource Corporation recognizes that observance of matters related to the environment and the development of business activities in harmony with the environment are basic requirements for the continuing existence of the Company.

Therefore, the Company has introduced an Environmental Management System and is promoting environmental management activities in a form based on the participation of all employees.

The President appoints an Environmental Management Officer, who is responsible for general supervision of the activities of all divisions. In each division, the head of the division (in the Head Office, the Manager of the General Affairs Group) is responsible for general supervision of that division and is responsible to higher divisions.



President and Representative Director	Decides environmental policy. Conducts reviews of guidelines and total evaluations of activities. Appoints the Environmental Management Officer and other officers related to the Environmental Management System.
Environmental Management Officer	Conducts meetings of the JFE Plastic Resource Environmental Committee. Gives instructions to the Manager of the Head Office General Affairs Group, Director of the Keihin Division, Director of the Fukuyama Division and the Secretariat, and carries out general supervision of activities.
Secretariat	Assists the Environmental Management Officer and plays the central role in carrying out the practical business of environmental activities.
JFE Plastic Resource Environmental Committee	Decides and reports activity items. The Committee consists of the President, Environmental Management Officer, Director of the Keihin Division, Director of the Fukuyama Division, Manager of the Head Office General Affairs Group and the Secretariat. Meetings are convened by the Environmental Management Officer.
Director of Keihin Division	General supervision of the Keihin Division based on items decided by the JFE Plastic Resource Environmental Committee.
Director of Fukuyama Division	General supervision of the Fukuyama Division based on items decided by the JFE Plastic Resource Environmental Committee.
Head Office / General Affairs Section	General supervision of the Head Office Division based on items decided by the JFE Plastic Resource Environmental Committee.

Environmental Certifications

➤ Mizue Recycling Plant

Together with East Japan Works (Keihin District) of JFE Steel Corporation, JFE Plastic Resource Corporation's Mizue Recycling Plant operates an Environmental Management System in accordance with ISO 14001. Mizue Recycling Plant promotes improvement of the environmental performance of the region through unified efforts with East Japan Works (Keihin District), where the plant is located.



➤ NF Board Plant and Fukuyama Recycling Plant

Activities related to reduction of environmental loads accompanying business activities, for example, energy saving and resource saving, etc., are being promoted in accordance with "Eco Action 21."

Self-checks of environmental loads and efforts, establishment of environmental policies, environmental targets and activity plans, implementation of plans, evaluation of efforts and reviews are carried out continuously as specified in guidelines.

To obtain more effective results, activities are conducted in an integrated manner, from corporate management to the efforts of each individual employee.



Safety and Health Management

Action Plan

Securing the safety and health of employees forms the foundation of a company. With the Basic Philosophy of "Give safety priority over all else," JFE Plastic Resource Corporation is continuing its ceaseless efforts to achieve this goal. Based on company-wide policies, each department (plant) promotes concrete management/activities corresponding to its own special features.

2015 Action Plan for Safety, Health and Disaster Prevention Activities

1. Basic Philosophy

"Give safety priority over all else."

2. Activity target

"Achieve a perfect no-accident record in all workplaces."

3. Slogans

"When an abnormality occurs, be sure to stop and perform KY."

(Kiken Yochi: Danger Prediction)

"Wait a minute! Take a deep breath before you act."

4. Activity Policies

(1) Improve the worst 5 activities through SK1 activities.

"Create a safe and comfortable workplace."

(2) By thoroughgoing implementation of cheerful greetings, pointing-and-calling and 5S,

"Create an attractive workplace with cheerful variety."

(3) Reinforce disaster risk management and strength the foundation of disaster prevention by disaster prevention training and execution of disaster prevention drills.

"Workplace where all employees can correctly handle fire extinguishers and fire hydrants."

(4) By promoting mental and physical health promotion,

"Create a workplace where health and thoughtfulness come to work."

JFE Plastic Resource Corporation



■ Social Activities

With Customers and Business Partners

Improve quality control and CS (customer satisfaction)

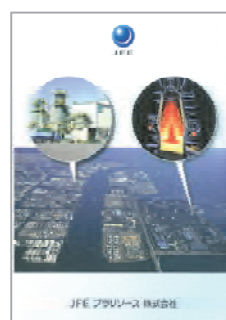
JFE Plastic Resource Corporation has established technical standards from the production division to the administrative division as part of its thoroughgoing quality management efforts. With the aim of improving customer satisfaction (CS), the Company communicates proactively with customers, and resolves problems by responding sincerely to every customer's opinions and requests.

Communication with Society

JFE Plastic Resource Corporation has posted a website on the internet since the Company was established in 2009.

➤ <http://www.jfe-plr.co.jp/>

This website includes an outline of JFE Plastic Resource Corporation, an introduction to its lines of business and main products (NF Board[®] and Pellet), environmental efforts and other information. The outline of the Company's business and its facilities are explained in easy-to-understand language so that all visitors to the website can understand the importance of recycling of container and packaging plastics, together with the technologies involved. The actual record of recycling and operation and maintenance (O&M) of facilities are available to the public, and are also updated periodically to show that JFE Plastic Resource Corporation is promoting business activities in harmony with the environment. As a tool for communication with all stakeholders, we also provide a contact for inquiries and requests for materials. A digital version of this annual publication is available via the JFE Plastic Resource Corporation website. We have also prepared English versions of pamphlets for use by customers in other countries. These pamphlets not only present a general introduction to the Company's business, but also introduce products and recycling methods.



Services for Visiting Customers

JFE Plastic Resource Corporation has set up Visitor's Rooms with panel displays showing the flow of the manufacturing process from raw materials to products, as well as exhibits of products produced by the Company, as well as products produced by customers utilizing our products. We also have a Product Development Room, where we introduce our efforts to improve product quality and provide further information.



Keihin Visitor's Room

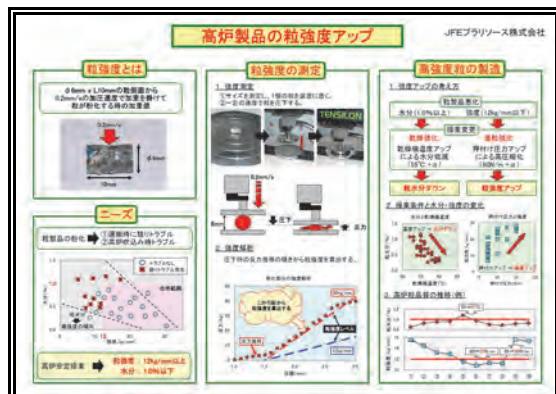


Fukuyama Visitor's Room



Fukuyama Product Development Room

Efforts to improve product quality



With Regional Society

Receiving Tours

With the aim of being a company which is open to regional society, JFE Plastic Resource Corporation actively receives tours by members of the general public. We introduce the Company's business, which is close to the lives of ordinary citizens, in explanations using videos and pamphlets, product introductions in the Visitor's Room and tours of the processing and production lines in our plants. The Company has also received visits from members of central government agencies, administrative agencies of municipalities and visitors from overseas.

Record of Visits FY 2014

	Number of visits	Number of visitors
General	10	288
Companies and organizations	12	122
Central government agencies	5	8
Municipal governments	17	134
Overseas visitors	1	11
Total	45	563



Enlightenment Activities

The Company's efforts in this area include participation in various types of events and lectures and presentations to members of the general public, as well as efforts to deepen understanding of "Recycling of container and packaging plastics" in general, not limited to our own business.

We also actively support and cooperate with the environmental enlightenment activities carried out by governmental and administrative agencies and related organizations.



○ "Kawasaki International Eco-Tech Fair 2015"
View of presentation



○ "Kawasaki Green Innovation"
Cooperation with interview for promotional video

Cooperation with Governmental and Administrative Agencies

Participation in Events

JFE Plastic Resource Corporation actively participates in various types of activities held by cities, towns, villages and others in connection with environmental activities as a whole, especially in the area of recycling of container and packaging plastics.

Date	Event
<p>June 2014</p>	<p>Fukuyama Eco Triathlon (Fukuyama City)</p> <p>To ensure that an environment-friendly lifestyle takes firm root, Fukuyama City makes wide-ranging calls to city citizens, businesses and organization so that efforts can be practiced throughout the year, and holds this event for a period of 9 months from June until March of the following year.</p> <p>JFE Plastic Resource Corporation supports this activity, and all employees of our Fukuyama Division also participate. This year we planted goya (bitter melon) vines in a flower bed on the grounds of our plant and entered a "Green Curtain Photo Contest."</p>  
<p>December 2014</p>	<p>Eco-Products 2014 (sponsored by Japan Environmental Management Association for Industry and Nikkei Inc.)</p>  <p>This is Japan's largest environmental exhibition. The theme of the 2014 event was "Discover Products to Change the Future!" The exhibition was held over a 3-day period (December 11-13) and attracted approximately 162,000 visitors. JFE Plastic Resource Corporation supported the event in Kawasaki City, and also exhibited at a booth in Kawasaki. Our presentation featured "NF Board[®]," which has been selected as a Low CO₂ Kawasaki Brand and public relations activities on visualization of recycling.</p>  <p>© Eco-Products 2014</p>

Date	Event
February 2015	<p>Kawasaki International Eco-Tech Fair 2015 (Kawasaki City)</p> <p>The theme of the 2015 Eco-Tech Fair was "Kawasaki now brings environmental technologies to the world."</p> <p>This event was held in Kawasaki City with the aim of bringing together a wide range of environment-friendly technologies and know-how to activate business matching, and attracted about 11,000 visitors during its 2-day period (February 5-6).</p> <p>JFE Plastic Resource Corporation exhibited as part of the JFE Group in fields related to environmental improvement, and made an easy-to-understand presentation using a model barn, etc.</p>  
March 2015	<p>Policy Roundtable with Kawasaki City (sponsored by (NPO) Liaison Center for Creation of Industry & Environment)</p> <p>This roundtable is held two times each year as part of activities aimed at creation of the environment and activation of industry in the coastal zone by collaboration among industry, academia, government and citizens, providing a platform for an exchange of opinions with the leadership of related agencies in Kawasaki City on recent movements in connection with the coastal zone, policy issues for the city and other topics. JFE Plastic Resource Corporation made a presentation on the significance and methods of "Recycling of container and packaging plastics" and the Company's own lines of business.</p> 

The Company also wished to express its sympathies to all those who were affected by the landslide disaster in Hiroshima caused by torrential rains in August 2014. As a local company, and as a business which recycles container and packaging plastics from Hiroshima, the Company contributed funds to assist in supporting the disaster-stricken area.

Cooperation with Kawasaki City's "Green Innovation" Promotion Activities

Under the slogan "From Kawasaki to the world," Kawasaki City is promoting "Green Innovation" in order to create the vitality of the Kawasaki City of the next generation by further development and expansion of efforts to take advantage of the environmental technologies and industries that are the strengths and special features of Kawasaki, and to create a sustainable society that will continue to maintain and improve the pleasant lives of city residents. A PR video was prepared on "Low CO₂ Kawasaki Brand" and the "Kawasaki Mechanism," which are advanced efforts among these projects, with the aims of realizing effective information dissemination and heightening Kawasaki City's presence in Japan and overseas.

JFE Plastic Resource Corporation's product, "NF Board[®]," has been approved and certified by Kawasaki City under both the "Low CO₂ Kawasaki Brand" and the "Kawasaki Mechanism," and Company representatives have also appear in business interviews.

The video includes comments that a "convincing PR effect" is expected by including 3rd party evaluations of the Company's products, which are also widely used outside of Kawasaki City, by means of the city's approval/certification system, and the fact that JFE Plastic Resource Corporation is promoting a recycling business which makes the maximum contribution to the global-scale economic and social greening activities that Kawasaki City is promoting.

This PR video is shown at various exhibitions, and is also distributed to persons related to local governments in other cities and overseas, who visit Kawasaki City for inspection tours, etc. It can also be used in promotional activities by approved/certified businesses. It is actively used by JFE Plastic Resource Corporation, contributing to communication of information to society.



Registration as Member of the "Kawasaki Innovation Cluster"

In March 2015, JFE Plastic Resource Corporation was registered as a member of the "Kawasaki Innovation Cluster," which was established based on the "Kawasaki City Green Innovation Promotion Policy" drawn up by Kawasaki City. The objects of the "Kawasaki Innovation Cluster" are businesses which contribute to the promotion of environmental industries. As a collection of independent organizations which utilizes the know-how possessed by the respective members in cooperation with Kawasaki City and other members, the Cluster not only promotes environmental industries and technology transfer within Japan, but also realizes an international contribution by technology transfer to overseas countries. Cluster members include a diverse range of organizations (industry, academia, government and the community) and others, such as companies, NPOs, universities, knowledgeable persons, supporting organizations, governmental and administrative agencies, etc. inside and outside the Kawasaki City region which are engaged outstanding environmental efforts with Kawasaki City with the aim of creating new projects, improving its value and a social contribution.

This Company's product, "NF Board[®]," which was researched, developed and is manufactured in Kawasaki City, has been approved as a true "Kawasaki developed product" under the "Low CO₂ Kawasaki Brand" system. As a Kawasaki born-and-bred company, JFE Plastic Resource Corporation is actively participating in this activity to contribute to building an environment-friendly society.



低CO₂川崎ブランド'09

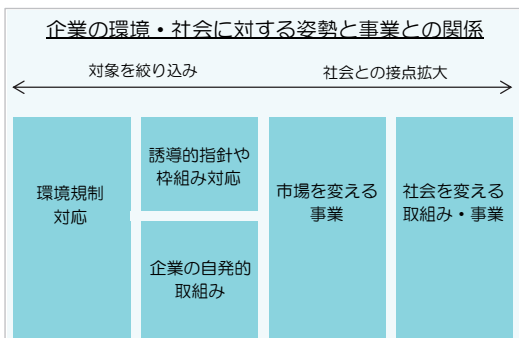
再生プラスチックコンクリート型枠「NFボード」

〜使用済みプラスチックを用いたコンクリート型枠〜

⇒ JFEプラリソース株式会社

生粋川崎育ち

- ・使用済みプラスチックを原料としたボード。使用済みプラスチックを原料とする軽量発泡層を、高剛性表面層ではさみこむことにより、軽量化と強靭さを両立。合板製型枠に代わり、コンクリート型枠に使用することで、森林伐採量を削減。
- ・川崎市内で研究開発・製造された生粋の川崎育ち製品。



External Evaluation

FY 2014 Fukuyama Environment Award

The Fukuyama Division of JFE Plastic Resource Corporation received the "2014 Fukuyama Environment Award" in the Business Category. This award, which is sponsored by Fukuyama City, was given in recognition of business activities in connection with the construction of a resource recycling-based society, including active participation in environmental events, etc. and promotion of "visualization" of recycling to city residents, for example, by installing solar power generation equipment on the roof of the Company's building. JFE Plastic Resource Corporation will continue to expand these activities in the future.



NF Board®

NF Board®, which was developed independently by JFE Plastic Resource Corporation, is a recycled product in which container and packaging plastics discharged by general households are used as the main raw material. In addition to being a recycled product, it has also been highly evaluated for its excellent durability (impact resistance, abrasion resistance, water resistance, chemical resistance), cleanliness, heat retaining property, soundproof property, freedom of workability (cutting, drilling and nailing are all possible) and easy handling, equal to that of virgin materials.

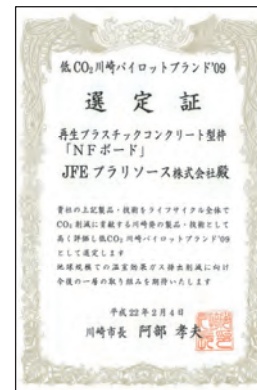
1) Kawasaki Mechanism certification






Jurisdiction: Kawasaki City
 Product name: "NF Board®"
 Certification No.: 25-02
 Date of certification: January 21, 2014



2) Selection as Low CO₂ Kawasaki Pilot Brand for 2009

Jurisdiction: Kawasaki City
 Certified product: Recycled plastic concrete form,
 "NF Board®"
 Date of certification: February 2010



<p>3) Construction Technology Review and Certification</p> <p>Jurisdiction: The Building Center of Japan (BCJ)</p> <p>Name of technology: NF Board®</p> <p>Certification No.: BCJ Review and Certification – 210</p> <p>Certification period: September 26, 2013 to September 25, 2018</p>	
<p>4) NETIS (New Technology Information System)</p> <p>Jurisdiction: Ministry of Land, Infrastructure, Transport and Tourism (MLIT)</p> <p>Name of new technology: NF Board®</p> <p>Registration No.: KT-090078</p> <p>Registration date: March 26, 2010</p>	
<p>5) Green Purchasing</p> <p>Jurisdiction: Ministry of the Environment (MOE)</p> <p>Category: Forms for concrete</p> <p>Name: NF Board®</p> <p>Date executed: March 10, 2008</p> <p>Use in bulletin board applications was added on September 5, 2014.</p>	
<p>6) Eco Mark</p> <p>Jurisdiction: Japan Environment Association (JEA)</p> <p>Product name: NF Board®</p> <p>Certification No.: 10 118 027</p> <p>Certification period: November 25, 2010 to August 31, 2015</p> <p>Product type: No. 118 "Plastic products Ver. 2.4"</p>	
<p>7) Trademark registration</p> <p>Jurisdiction: Japan Patent Office</p> <p>Trademark: NF Board®</p> <p>Registration No.: No. 5481636</p> <p>Registration date: March 30, 2012</p>	

With Employees: Safety and Health Activities

Industrial Safety and Health

Securing the safety and health of employees is the foundation of a company. With our Basic Philosophy of "Give safety priority over all else," JFE Plastic Resource Corporation conducts continuing safety activities based on the top idea that "Safety is formed by 'consideration.'" Consideration for employees by the Company leads to quick improvement of the labor environment. Employees show consideration for themselves and consideration for others. Consideration for oneself means avoiding dangerous actions, and consideration for others (members of one's group) means reminding them to participate in calling out activities. At the same time, concrete safety activities corresponding to the special features of each department (factory) are also important. Aiming at the activity target "Achieve a perfect no-accident record in all workplaces," the Company encourages bottom-up activities such as rehearsals and reporting of near-misses in each workplace.

JFE Plastic Resource Corporation and its employees cooperate in concert and grapple with a variety of activities in order to reduce the risk of industrial accidents and occupational diseases as far as possible in the work space.

Presentations of Rehearsals

Practice exercises, that is, "rehearsals," are carried out under the same conditions as the actual event. It goes without saying that each workplace also voluntarily considers the environmental impacts of dangerous work and the efficiency of work. The results of countermeasures and improvement activities are presented at meetings of the Safety and Health Committee, together with practical skills.



Safety Conference

Examples of the results of daily activities are presented at the Company-wide Safety Conference at the end of each fiscal year to promote sharing and horizontal development. Beginning with countermeasures for the "Worst 5 Jobs," which have high risk levels, the results of work safety and environmental improvement activities carried out through the year are presented. At the same time, this event is also used as a platform for exchanges between the Keihin and Fukuyama Districts.



◇ March 27, 2015

■ Disaster Prevention Efforts

➤ Disaster Prevention Management

Disaster prevention is the lifeline of a company and is a responsibility to society. The Company performs disaster risk management, identifies critical items for disaster prevention management and carries out daily disaster prevention inspections. Emergency response measures are provided in technical standards. The Company periodically conducts education, training and reflection, and promotes improvement of disaster prevention management.



➤ Disaster Preventions Drills

Because the plastics which this Company handles are flammable materials, we pay especially careful attention to fire prevention. Prompt, early-stage fire extinguishing activities when a fire occurs are important. For this reason, JFE Plastic Resource Corporation conducts regular joint drills with the Fire Department and the steel works fire brigade.

- ◇ Keihin District: May 23, 2014
- ◇ Fukuyama District: May 28, 2014



➤ Drills Assuming Large-Scale Earthquake

JFE Plastic Resource Corporation conducts practice drills which include action, contact and evacuation which must be performed when a large-scale disaster occurs. This year, in addition to the primary evacuation immediately after an earthquake, we conducted secondary evacuation drills assuming the occurrence of a tsunami. We also carry out drills to check the safety of personnel by using mobile phones throughout the entire company.

- ◇ Company-wide drill: September 19, 2014
September 26, 2014



➤ Participation in Outside Competitions

The Company participates in firefighting competitions sponsored by city fire departments every year. The participants are changed each time in order to improve skills.

- ◇ Fukuyama District: October 7, 2014



With Employees: Creating a Safe Environment

The Company carries out safety activities throughout the year with the aim of achieving "a perfect no-accident record." As a result, the level of employee workplace safety has improved year by year. We are also devoting great effort to human error prevention in order to secure an even higher level of safety.

➤ What is human error?

Human error means error or failure caused by humans. It is the result of mistakes in recognition, judgment, action and other human activities. JIS Z8115: 2000 defines human error as "a human action which causes an unintended result."

Based on the viewpoint that "as long as humans are involved, error (failure) can occur," it is considered necessary to take countermeasures for human error.

Efforts to Prevent Human Error

Among the various approaches to prevention of human error, this year, in addition to promoting attention by appealing to the visual sense, JFE Plastic Resource Corporation implemented countermeasures in line with the concept of "foolproof," that is, taking measures in advance so that safety can be secured even in case of erroneous operation by an operator.

○ Prevention of Forklift Accidents

Forklift operation is indispensable for the operation of a factory, and is also a job in which every person in the workplace participates. Because forklift operation is routine work, a feeling of "familiarity" or "carelessness" can easily occur. Observing speed limits is the starting point for safe operation. To ensure that everyone knows and understands the speed limits, speed limit signs are placed in the factory, and speed limits are also clearly displayed on the forklift itself. In addition, speed-governing devices have also been installed on all forklifts. As a result of these efforts, it was possible to achieve zero forklift accidents.



○ Prevention of accidents in which personnel are caught in machinery

There is a potential risk of this kind of accident whenever personnel open an equipment inspection window or the like. To prevent errors in judgment to the effect that "just a little won't cause any trouble" or "because we're in a hurry," red painting and signs calling attention to opening are used to ensure that all the necessary conditions are observed when equipment is opened (e.g., the equipment is stopped and the power is turned off). The Company has also improved safety by heightening the appeal to the visual sense.



Lectures/Guidance by Industrial Physician

In monthly meetings of the Safety and Health Committee, participants receive lectures from an industrial physician on a wide range of themes, from guidance centering on safety and health management in the workplace to efforts to manage the health of individuals. The industrial physician also participates in workplace patrols. At the same time, the physician carries out safer, more suitable policies for "Building mental and physical health" for employees, for example, by allowing personnel to receive advice from the viewpoint of a health care provider.

April	"Smoking-related health issues"	October	"Treatment of injuries and phlegmon (cellulitis)"
May	"Countermeasures for heat stroke"	November	"Talking about alcohol and fatigue"
June	"Let's exercise!"	December	"Let's make a health plan"
July	"About blood pressure"	January	"About pollen allergies"
August	"Report of heat stroke patrol for FY 2014"	February	"Sleep apnea syndrome (SAS)"
September	"Results of mental health questionnaire"	March	"Passive Smoking Prevention Law and revision of law"



Mental Health Efforts

To secure the safety and health of employees, the Company makes efforts in "Mental health care communicating a considerate heart." An annual schedule and targets for achievement are established through an advice of the industrial physician, and the Company works to enhance the content in cooperation with specialized institutions. Employee stress check tests are conducted each year. In addition to individual stress profiles, the stress risk associated with the special features and work of each workplace is also assessed. While prioritizing health care activities for maintaining and improving mental health, the Company also aims to create a workplace where each individual can recognize the bad condition and signs of fellow employees.



■ Workplace Activation No. 1 Activities

What operates machines and creates products/quality is "people." In order to train the "people" who support manufacturing, JFE Plastic Resource Corporation is promoting Workplace Activation No. 1 Activities (SK1 Activities).

The foundation for these activities was laid over the 3-year period from FY 2001 to FY 2013, and the Company aimed to further raise the minimum standard in FY 2014.

➤ Activity Policy

Slogans: "Circle of People," "Circle of Wisdom," "Circle of Improvement" so as to spread by active communication.

Basic policy: Thoroughly discuss problems with the status quo and improve problem-solving capabilities.
"Create miracles by accumulated ingenuity and effort" so that all members experience a feeling of achievement and a feeling of satisfaction.

➤ Results of Activities

Eighteen themes were registered this year. Of that number, half targeted improvement of quality and efficiency. One especially noteworthy development was an increase in the number of groups grappling enthusiastically with a problem which requires a huge amount of ingenuity and labor, namely, achieving a large reduction in materials which had been treated as industrial waste until now.

In activities on the theme of environmental protection, participants made efforts which enabled a real feeling of evolution from the stage of environmental awareness taking root in the workplace to a higher level.

➤ Summary

This was a year when efforts were devoted to a further activation of communication in the development of activities from laying the foundation to the next stage. In the production division, operator teams, which aim at efficient operation of the factory, and equipment maintenance teams, which preserve the stable operation of the factory, worked in cooperation with safety as a pillar. Unified production-sales activities were also carried out with the participation of the sales division. In addition, the Secretariat and managers provided support to enable concerted promotion of activities in the Company as a whole.

➤ Results Presentation Meeting

The results of the year's activities were presented by each group. The feeling of achievement and stimulation between groups contributed to the continuation and development of activities.

◇ February 13, 2015



■ BEST Activities

This was the second year of "BEST Activities" aimed at "Creation of Japan's Safest, Most Pleasant Workplace," which began under a 3-year plan covering FY 2013 to FY 2015.

➤ What is BEST?

BEM

The vitality and safety of the workplace are improved by appropriately playing Background Encouraging Music in offices and factories to create a sense of stability and relaxation in employees' hearts.

Skill up

A "Skill Up Board" showing the key points for operation and safety is posted at each main equipment so that employees can improve their technical skills and perform KY (Danger Prediction) regarding points that require special attention in work.

Tool box

Work efficiency is improved and a safe and pleasant workplace is secured by visually placing and controlling the tools necessary in work at each main equipment.

➤ Results for FY 2014

"Challenge a Perfect No-Accident Record" was declared simultaneously with the start of the fiscal year, and themes were posted each month as part of efforts to further deepen and develop "BEST Activities."

In particular, the Company observes Special Safety Months in summer, when there is a high risk of heat stroke, and around the end of the year/New Year's, when fires easily occur. We have also strengthened mutual caution activities, such as putting up flags with handwritten safety slogans solicited/selected in the Company. In safety promotion activities, we work to improve the danger prediction environment, for example, by showing stop lines on roads and encouraging complete use of the pointing-and-calling safety method by displaying colors in places around equipment where special attention is necessary. In addition, managers have established further sharing of danger awareness by all employees in the workplace based on the 3G system (genba, genbutsu, genjitsu = actual production site, actual thing, actual reality). We have also made it a customary practice to repeat safety in unison at the start of work, do deep breathing before starting work, and clean up after each job; this has made it possible to prevent unsafe action. As a result of these activities, JFE Plastic Resource Corporation achieved its goal of a "Perfect No-Accident Record."





■ Environmental Activities

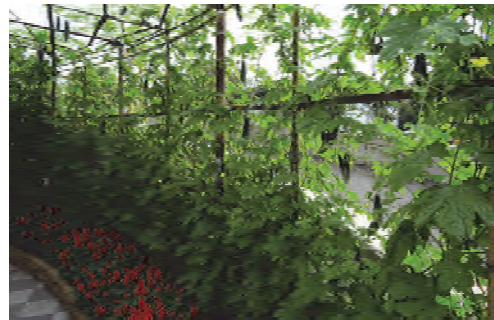
Environmental Management Efforts

Environmental Management

JFE Plastic Resource Corporation is working to create a recycling-based society through its container and packaging plastics recycling business. We have established a "Basic Policy/Action Guidelines" and are continuously developing environmental management activities with the participation of all employees. With a constant awareness that "recycling is our business," we promote effective activities with the aim of heightening the environmental awareness of each individual employee and being a top-level environment-friendly company.

Aiming at harmony with the region

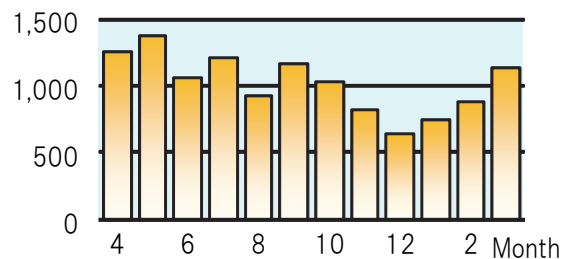
We have posted signs at plant entrances stating that "We contribute to building a society in harmony with the environment" in order to declare the Company's policy to visitors. We also regularly maintain the greenbelts at our sites and carry out road cleaning activities along neighboring roads. In the summer of this year, we planted a green curtain of goya vines in the flower bed at a rest area, and in the winter, we planted roses, which were an extra prize of the "Fukuyama Environment Award." Thus, we are promoting environmental beautification with members of the local community with the aim of being an environment-friendly company.



Solar Power Generation

At our Fukuyama District, we installed solar power generating equipment with a capacity of 12kW and began full-scale power generation (equivalent to approximately 4 general households) in August of 2013. The plant location has been approved as a "Fukuyama Next-Generation Energy Park," and is accumulating solar power generation equipment, beginning with Chugoku Electric Power's mega-solar facility (Fukuyama Photovoltaic Power Station; capacity: 3MW). JFE Plastic Resource Corporation also uses this as registered related facilities in order to assist in improving the environmental performance of the region.

○ Electric power generation FY 2014 (kWh/month)



Environmental Communication

Disclosure of Environmental Information

JFE Plastic Resource Corporation sets control values and target values for each plant, and is working to reduce environmental loads and reduce energy consumption and resource consumption. The main data are linked to the next month's activities by carrying out evaluations/extracting problems each month. These are announced publicly as the "Record of Facility Operation & Maintenance (O&M)" on the Company's website, and are also updated each month.

To communicate the environmental efforts of the NF Board Plant and Fukuyama Recycling Plant, the degree of achievement vs. targets and other information are published in the Eco Action 21 Environmental Activities Report.

○ JFE Plastic Resource Corporation website: "Record of Facility Operation & Maintenance (O&M)"

目的	区分	項目	単位	管理値	3月		測定頻度	備考
					3月	3月		
水江	公害防止	①大気(1系)	ばいじん	g/m ³ N	0.10以下	0.002	3ヶ月毎(6、9、12、3月)	ライン毎
			硫酸酸化物	m ³ N/h	1.45以下	0.10		
			窒素酸化物	ppm	230以下	15		
		①大気(2系)	ばいじん	g/m ³ N	0.10以下	0.003		
			硫酸酸化物	m ³ N/h	1.45以下	0.01		
			窒素酸化物	ppm	230以下	1		
		②側溝滞留水	pH	-	5.8~8.6	7.9		
			COD	mg/L	130以下	4.2		
		③臭気	敷地境界	-	25以下	20		
			ペール置場	-	75以下	69		
	④振動	敷地境界	dB	60以下	45			
		敷地境界	dB	75以下	71			
	廃棄物管理	⑥⑦⑧	⑥プラ廃棄物発生量	kg/t	200以下	140		
			⑦プラ廃棄物熱利用効率	%	80以上	80		
			⑧汚泥排出量	kg/t	40以下	27		
	環境負荷管理	⑨CO ₂ 排出量	kg-CO ₂ /t	390以下	255			
			kg-CO ₂ /t	390以下	255			
	化学物質管理	⑩消泡剤	kg/t	3.9以下	2.2			
kg/t			0.10以下	0.10				
用役管理	⑫電力	kWh/t	600以下	382				
		kg-CO ₂ /t	48以下	7				
	⑬Cガス	m ³ N/t	25以下	20				
		kg/t	48以下	0.20				
	⑭水資源	m ³ /t	0.30以下	0.20				
		L/t	4.0以下	4.0				
⑮車両燃料	軽油	L/t	4.0以下	4.0				
	ガソリン	L/t	0.20以下	0.01				
福山	公害防止	①大気(1系)	ばいじん	g/m ³ N	0.03以下	0.0016	3ヶ月毎(6、9、12、3月)	工場全体
			硫酸酸化物	m ³ N/h	1.85以下	0.020		
			窒素酸化物	ppm	230以下	15		
		①大気(2系)	ばいじん	g/m ³ N	0.03以下	0.0020		
			硫酸酸化物	m ³ N/h	1.85以下	0.016		
			窒素酸化物	ppm	230以下	15		
		②側溝滞留水	pH	-	5.5~9.0	7.1		
			COD	mg/L	130以下	20.0		
		③臭気	敷地境界	-	25以下	24		
			ペール置場	-	75以下	68		
	④振動	敷地境界	dB	60以下	36			
		敷地境界	dB	60以下	56			
	廃棄物管理	⑥⑦⑧	⑥プラ廃棄物発生量	kg/t	280以下	197		
			⑦プラ廃棄物熱利用効率	%	70以上	73		
			⑧汚泥排出量	kg/t	50以下	47		
	環境負荷管理	⑨CO ₂ 排出量	kg-CO ₂ /t	240以下	206			
			kg-CO ₂ /t	240以下	206			
	化学物質管理	⑩消泡剤	kg/t	3.5以下	2.6			
kg/t			0.20以下	0.11				
用役管理	⑫電力	kWh/t	400以下	351				
		kg-CO ₂ /t	400以下	351				
	⑬都市ガス	m ³ N/t	10以下	10.0				
		kg/t	-	0.0				
	⑭水資源	m ³ /t	0.30以下	0.19				
		L/t	5.0以下	4.3				
⑮車両燃料	軽油	L/t	5.0以下	4.3				
	ガソリン	L/t	0.10以下	0.04				

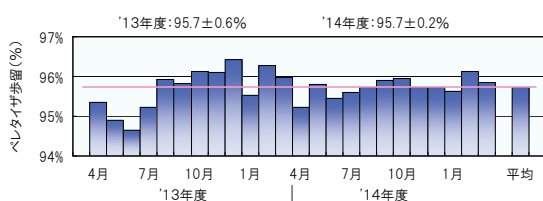
○ "Eco Action 21 Environmental Activities Report"

1) 実績まとめ

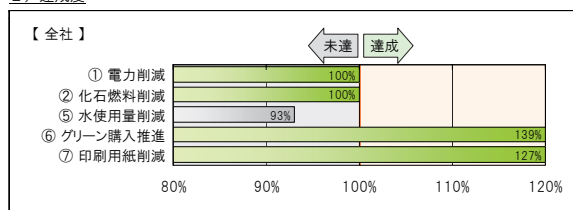
[1] CO₂排出量削減

項目	単位	目標	実績	達成率	評価	
CO ₂ 排出量削減	福山	kg-CO ₂ /t	309以下	308	100%	達成
	NF	kg-CO ₂ /t	291以下	288	101%	達成
	全社	kg-CO ₂ /t	302以下	301	100%	達成

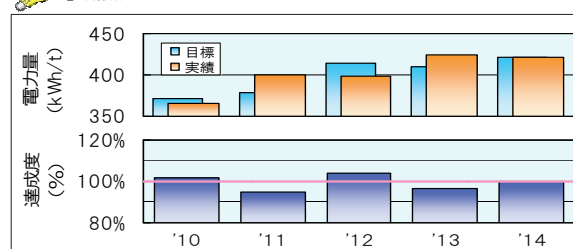
①	電力削減 & CO ₂ 削減	福山	単位	目標	実績	達成率	評価
			kWh/t	379以下	378	100%	達成
			kg-CO ₂ /t	276以下	275	100%	達成
	NF	kWh/t	513以下	506	101%	達成	
		kg-CO ₂ /t	290以下	287	101%	達成	
	全社	kWh/t	422以下	421	100%	達成	
		kg-CO ₂ /t	290以下	279	100%	達成	



2) 達成度



電力削減

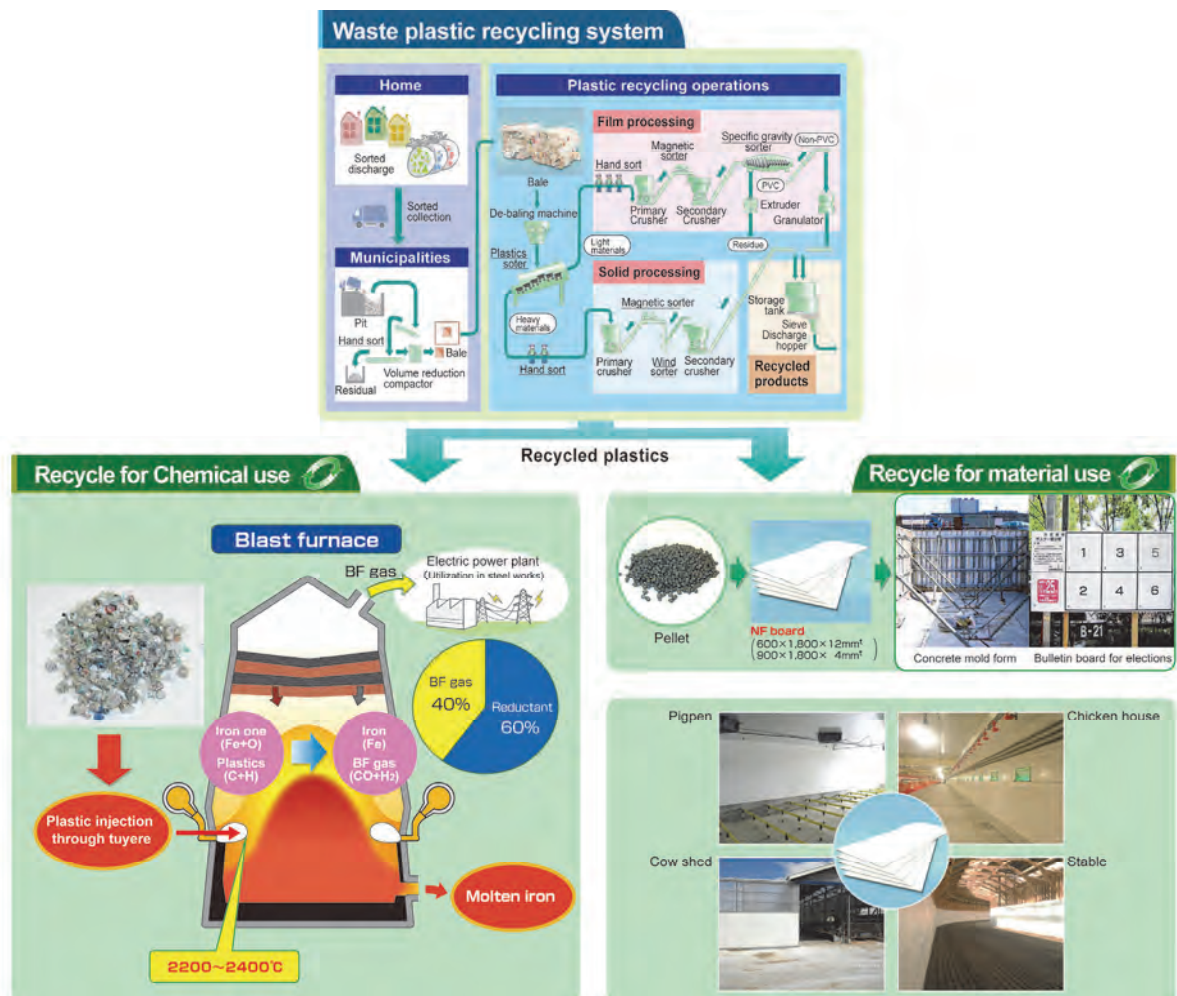


Environment-friendly Products/Services

Through an Integrated System for Recycling of Waste Plastics

JFE Plastic Resource Corporation is promoting the formation of a recycling-based society by resource recycling of container and packaging plastics discharged by general households, and recycling these materials to society as recycled plastic products, beginning with our NF Board®.

- 1) Sorted discharge from general households
Sorting and discharge of valuable urban resources by general households.
- 2) Sorted collection, classification and baling by local governments
Local governments, including cities, towns and villages collect various types of waste separately (= sorted collection), perform classification to remove foreign materials, and compact and bale the recovered resources.
- 3) Recycling as resources by JFE Plastic Resource Corporation
JFE Plastic Resource Corporation performs the further processes of classification, crushing, pulverizing, separation of vinyl chloride, washing, dewatering and drying, followed by granulation/pelletizing. The resulting products are recycled plastic resources.
- 4) Recycling to society
JFE Plastic Resource Corporation recycles these resources to society by processing into NF Board® and other recycled plastic products. Recycled plastic resources are also utilized as a substitute for coal in blast furnaces in the steel manufacturing process, thereby contributing to saving fossil resources.

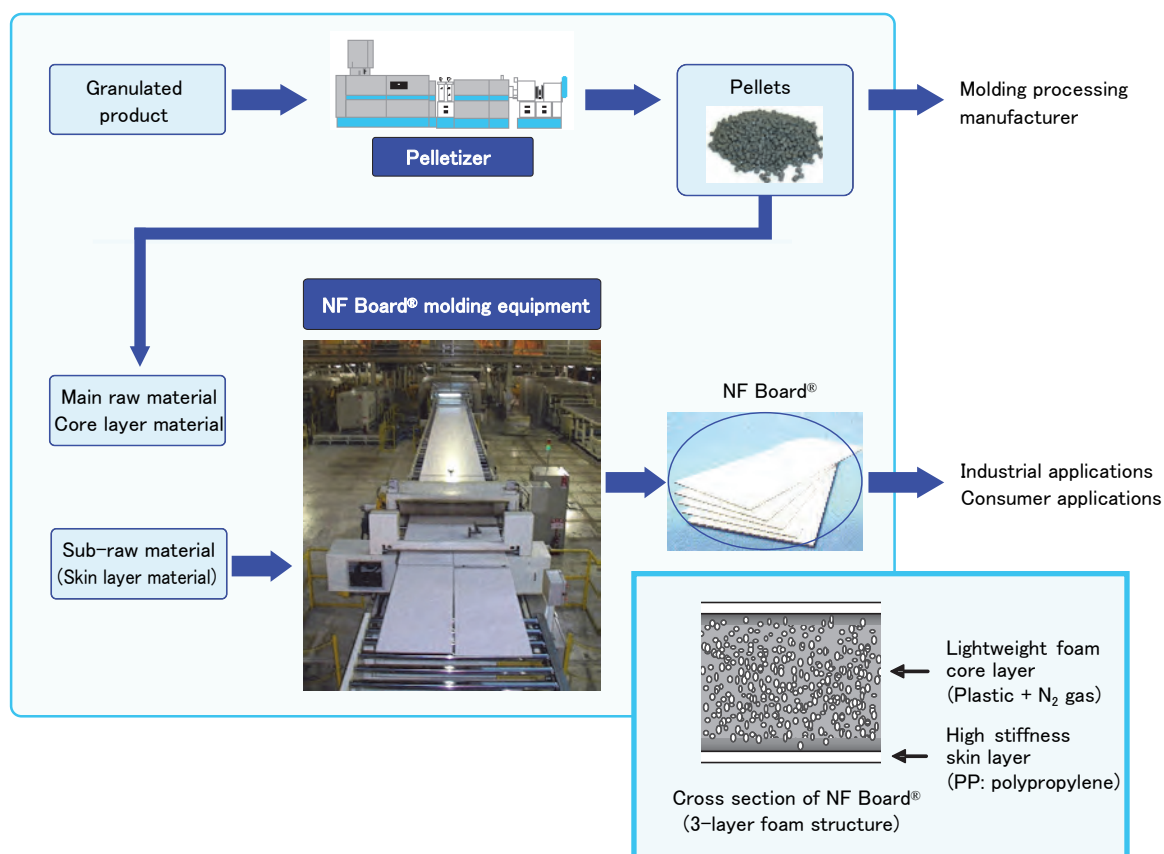


Through Our Products

JFE Plastic Resource Corporation independently developed the recycled plastic board product NF Board® as a recycled product made from container and packaging plastics.

NF Board® has a 3-layer structure consisting of a lightweight foam core layer, in which container and packaging plastics are reused, and high stiffness skin layers on the two sides of the core layer. This recycled product has a number of outstanding features, including excellent durability (impact resistance, wear/abrasion resistance, water resistance and chemical resistance), cleanliness, heat retaining property, soundproof property and free workability (cutting, drilling and nailing are all possible), as well as easy handling on par with that of virgin materials.

JFE Plastic Resource Corporation has also constructed a "cascade recycling system" in which used boards are collected and recycled again, and thus is promoting complete resource recycling.

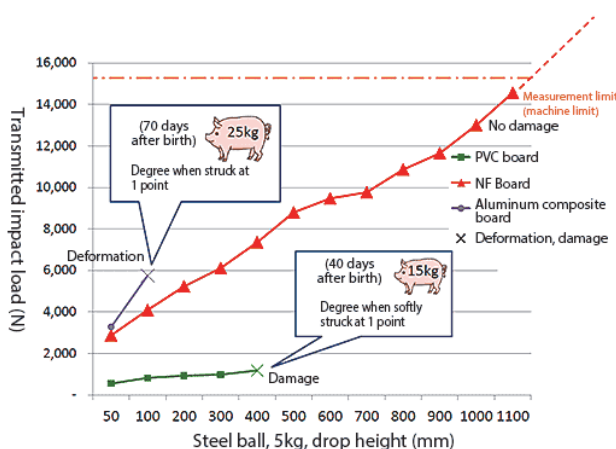


NF Board[®], which was developed independently by JFE Plastic Resource Corporation, has been highly evaluated for its excellent impact resistance and cleanliness. This product is mainly used as an inner wall material for barns (pig pens, chicken houses) and stables. It has also been certified for use in forms for the foundations of signs on the Metropolitan Expressway in Tokyo and forms for the foundations of signals of the Metropolitan Police Department, which are public facilities. We are also conducting successive performance comparison tests of NF Board[®] in order to develop and propose additional applications. We are actively disseminating information by way of the JFE Plastic Resource Corporation website, trade papers, etc. so as to respond to the various needs of customers in every situation.



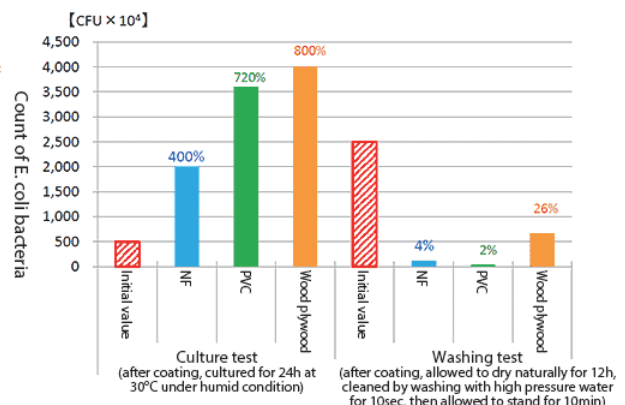
➤ Performance Comparison Tests of NF Board[®]

○ Drop weight impact test



Because NF Board[®] absorbs impact, it can be expected to remain undamaged even after impact.

○ Bacteria proliferation test/washing test



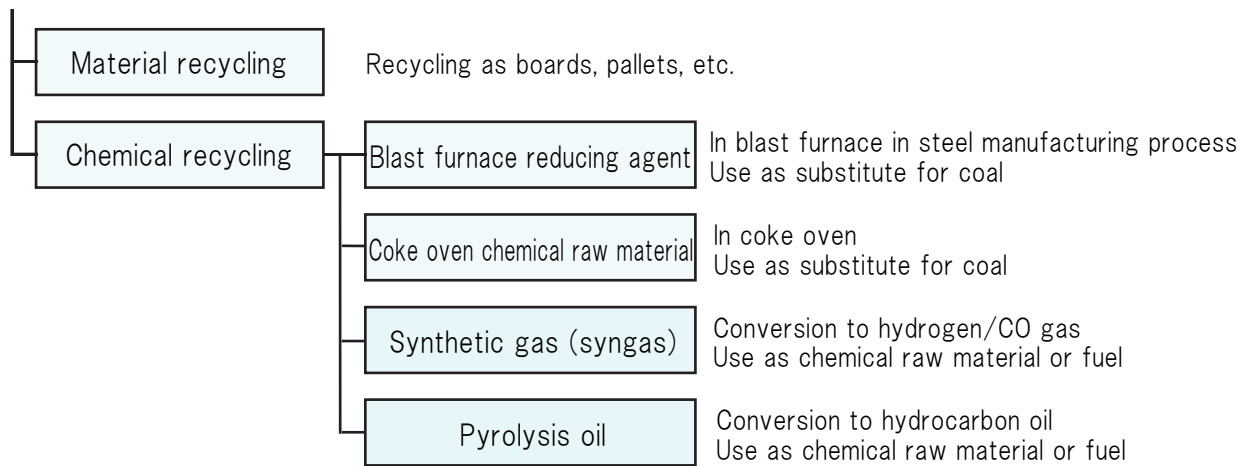
It also has an antibacterial action and can be expected to maintain cleanliness, as it can be restored to a clean condition simply by washing.

Reduction of Environmental Loads

Recycling of Container and Packaging Plastics

Recycling of container and packaging plastics discharged by general households is based on Japan's Law for Promotion of Sorted Collection and Recycling of Containers and Packaging (Containers and Packaging Recycling Law). Five recycling methods are provided under the law, of which JFE Plastic Resource Corporation uses the three methods of "Blast furnace reducing agent," "Coke oven chemical raw material" and "Material recycling." JFE Plastic Resource Corporation began recycling simultaneously with the enforcement of the law in April 2000, and has worked to build a recycling-based society since that time.

○ Recycling methods for container and packaging plastics

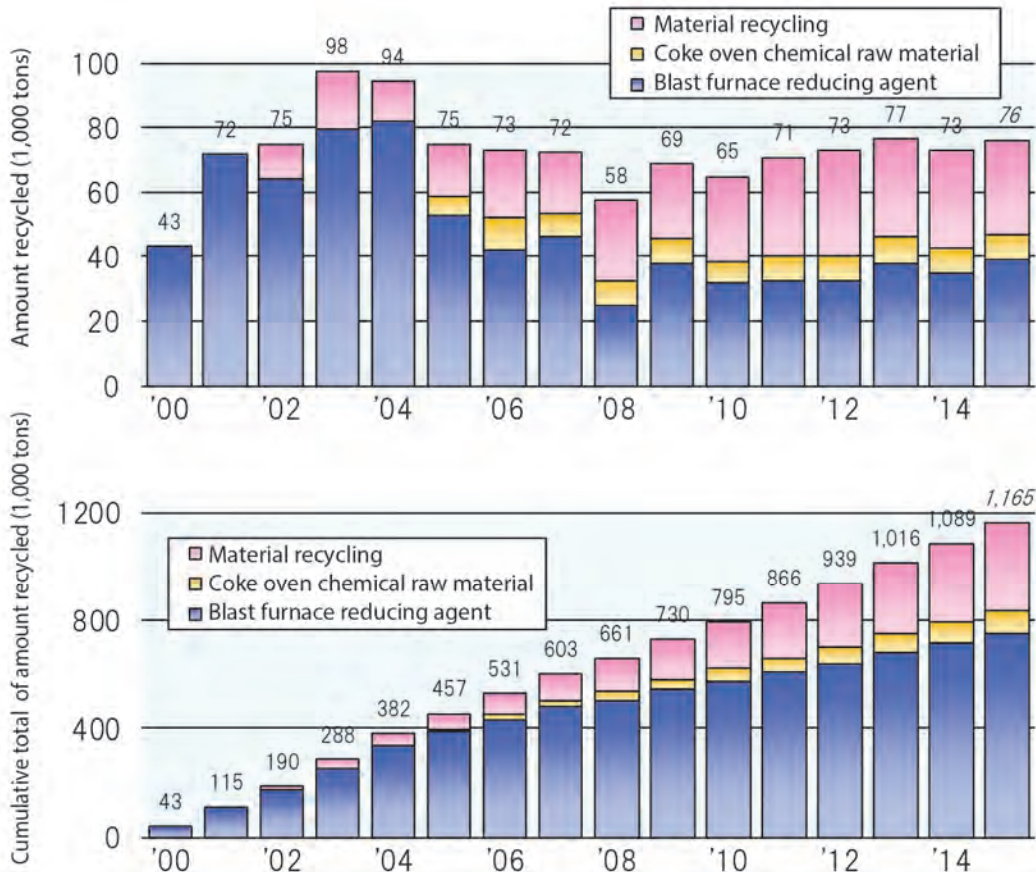


○ Start of operation

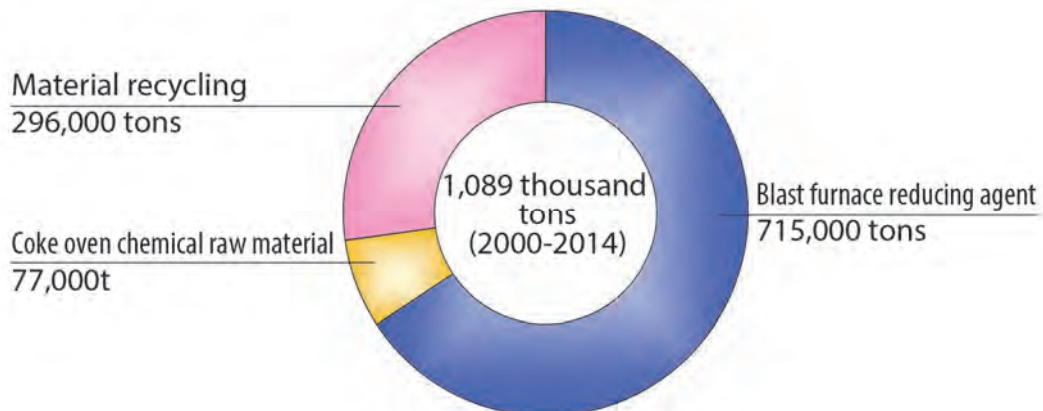
Plant	Method	2000	2002	2004	2006	2008	2010	2012	2014	
Mizue Recycling Plant	Blast furnace	▶								15years
	Coke oven			▶						10years
	Material recycling		▶							13years
Fukuyama Recycling Plant	Blast furnace	▶								15years
	Material recycling			▶						9years

Since beginning business in FY 2000, JFE Plastic Resource Corporation has recycled a total of 1,089 thousand tons of container and packaging plastics. This is about 14% of Japan's national total.

○ Transition of container and packaging plastic recycling amount



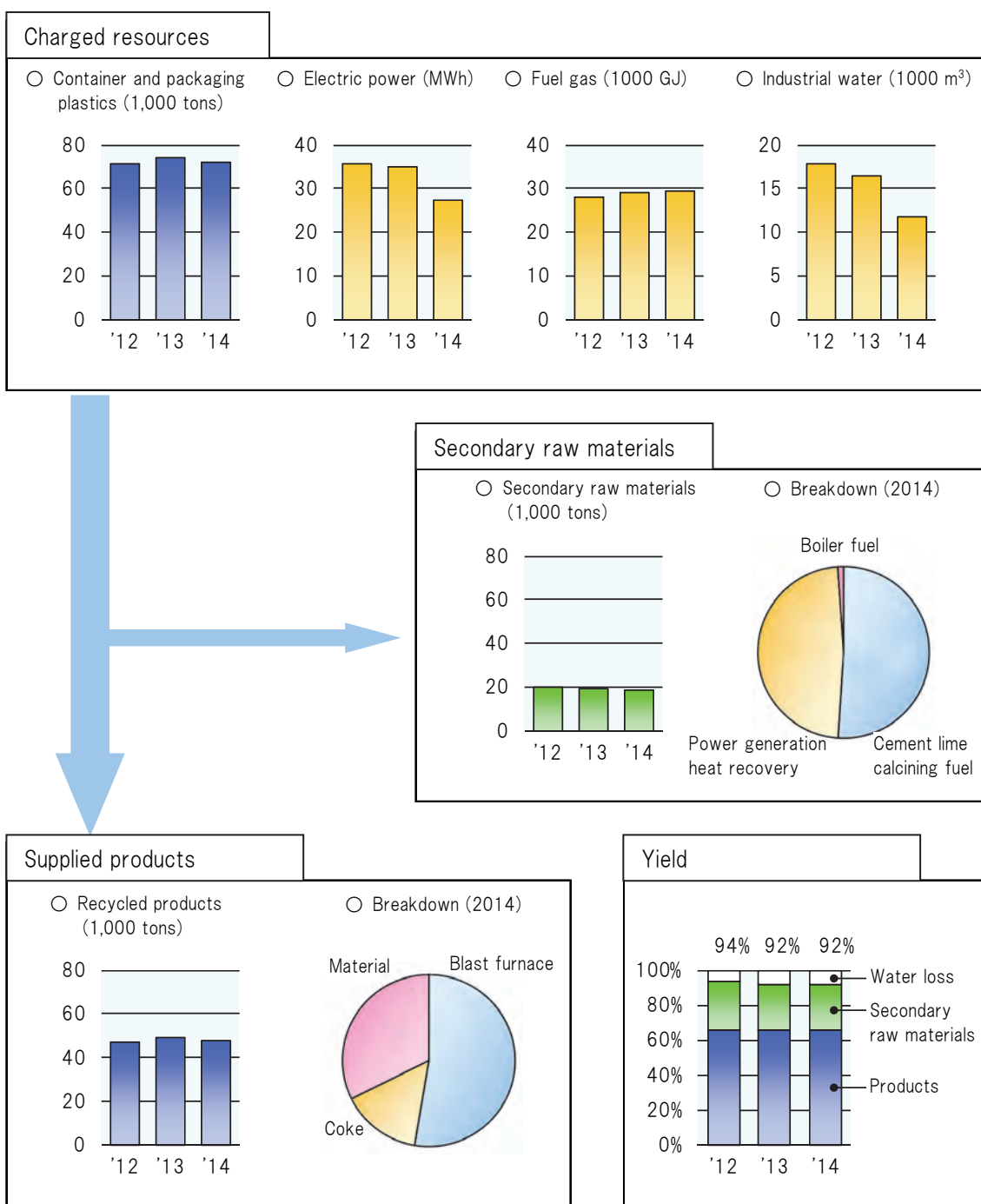
○ Breakdown of recycling techniques



Material Balance in Recycling

Using container and packaging plastics discharged from general households as raw materials, JFE Plastic Resource Corporation produces the recycled products "Blast furnace reducing agent," "Coke oven chemical raw material" and "Material recycling products."

The yield of recycled products is approximately 65%. Secondary raw materials account for somewhat more than 25%. The secondary raw materials used in these products include cement/lime calcining fuel, etc. As the total of recycled products and secondary raw materials is 92-94%, virtually the total amount, with the exception of water loss, is utilized effectively.

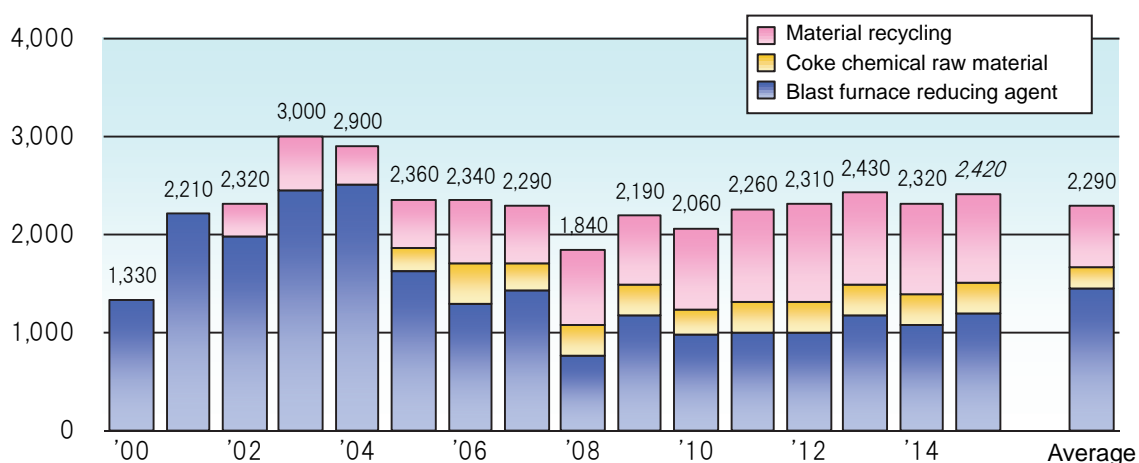


■ Reduction of Energy Consumption and CO₂ Emissions by Recycling

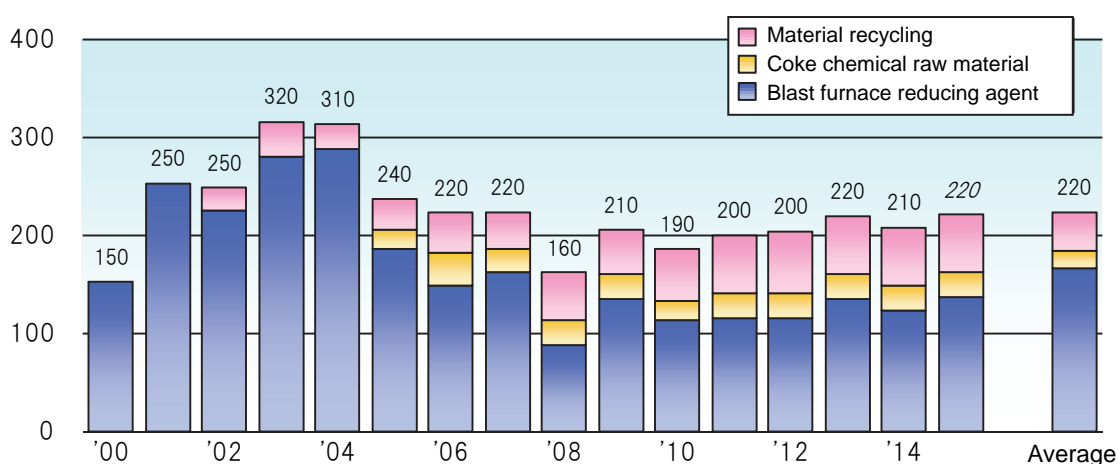
The Japan Containers and Packaging Recycling Association evaluated the environmental load reduction effects of recycling of container and packaging plastics, such as reduction of energy consumption, reduction of CO₂ emissions, etc., and summarized the results in "Study of Environmental Loads, Etc. related to Plastic Container and Packaging Recycling Methods" (June 2007). Applying the reduction unit values in that report, this Company's energy consumption reduction effect and CO₂ emissions reduction effect are as follows.

The reduction in energy consumption is approximately 2,300 thousand GJ/year (equivalent to the energy consumption of about 60,000 general households), and the CO₂ reduction is approximately 220 thousand tons/year (equivalent to the CO₂ emissions of about 40,000 general households). Thus, the Company's recycling business is making a large contribution to reducing environmental loads.

○ Reduction of energy consumption by recycling (1,000 GJ/year)



○ Reduction of CO₂ emissions by recycling (1,000 tons /year)



■ Aiming at Advanced Recycling

– Evaluation Using MFCA (Environmental Accounting) Technique –

In this Company's material balance, approximately 65% of container and packaging plastics, which are charged materials are recycled products, somewhat over 25% is secondary raw materials and the remainder is water loss.

From the viewpoint of resource use, the Company gives full consideration to reducing environmental loads in both recycled products and secondary raw materials, and virtually the entire amount is returned to society.

However, unlike recycled products, the company pays a processing cost for secondary resources to the user (disposal contractor). Thus, from the viewpoint of the Company's financial management, it can be said that the loss associated with product production accounts for somewhat more than 25%. In accounting, this is evaluated as a minus; it can be considered to be a "negative product" as defined in the MFCA technique. Negative products are generated through the manufacturing process in the same manner as our essential recycled products ("positive products"). As a result, it is understood that negative products incur a cost like the production cost incurred by positive products.

Therefore, JFE Plastic Resource Corporation introduced the MFCA technique for all products in order to clarify the costs in each production process, and began evaluation based on this method from this fiscal year.

➤ What is MFCA?

MFCA is an abbreviation for "Material Flow Cost Accounting." It is an accounting technique which is used to calculate the amounts and costs of materials (raw materials, etc.) in each production process. This method is used in environmental accounting, which makes it possible to evaluate material efficiency and economic efficiency.

The method was standardized as ISO 14051 (MFCA) in 2011.

➤ Purpose

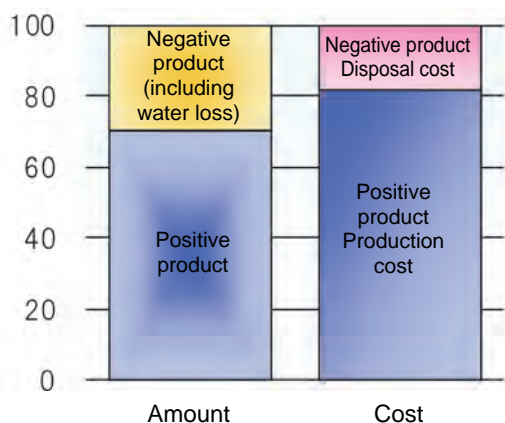
Conventionally, the costs incurred in the product production process were considered to be limited to the recycled product (positive product), and the costs incurred by secondary resources (negative products) were treated as a "disposal cost."

We are now grappling with activities to reduce costs and environmental loads more effectively by correctly evaluating the production costs associated with negative products by using the new MFCA technique.

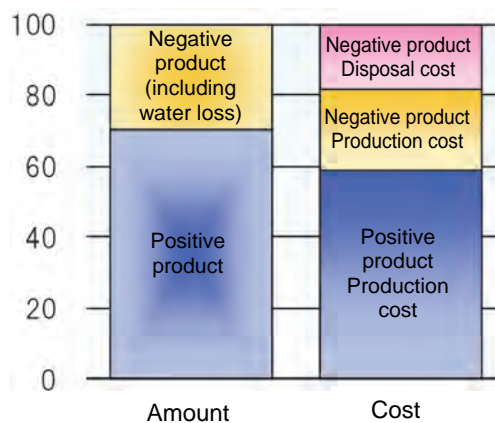
➤ Material and Cost Balance Analysis under Status Quo and its Evaluation

Under the conventional evaluation method, it was assumed that only "disposal cost" was incurred by negative products. Therefore, finding lower cost users (disposal contractors), while considering environmental loads, was considered important.

○ Conventional evaluation method (%)



○ Evaluation by MFCA (%)

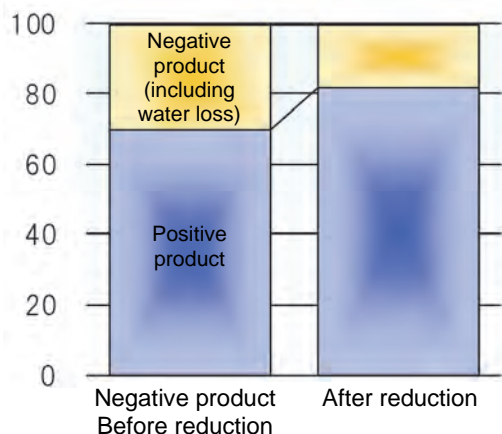


However, in an evaluation by MFCA, negative products also incur "Production costs" in the same way as positive products. From this it was understood that the most important issue is reduction of the production costs of negative products.

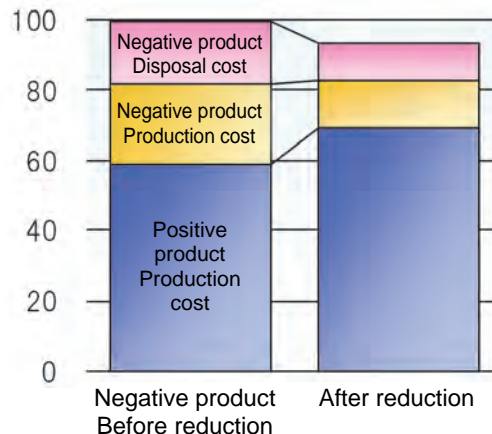
➤ In Order to Reduce the Production Cost of Negative Products

Reducing the "Production cost" of negative products means reducing the "Amount" of negative products. Reducing the amount of negative products also reduces the "Disposal cost" of negative products. As a result, the amount of positive products increases.

○ Material balance (%)




○ Cost balance (%)



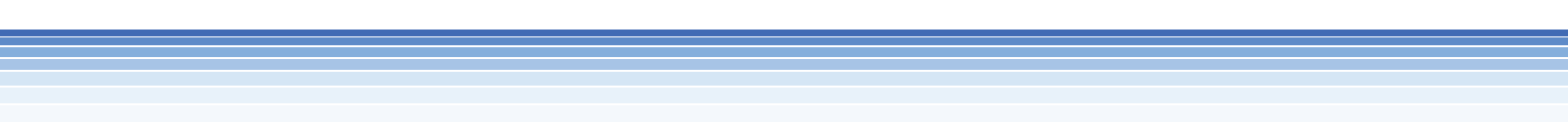
Reducing the amount of negative products leads to a reduction of total costs.

For JFE Plastic Resource Corporation, increasing the ratio of positive products (including off-grade products) is a key issue for environment-friendly management, and we are putting great effort into achieving this goal.



JFE Plastic Resource Corporation -
Contributing to building a resource
recycling-based society through the plastic
container and packaging recycling business.







JFE Plastic Resource Corporation

Head Office/Keihin Division

5-1 Mizuecho, Kawasaki-ku, Kawasaki, Kanagawa Pref., 210-0866, Japan
TEL: +81-44-299-5193 FAX: +81-44-299-5328

Fukuyama Division

113 Minookicho, Fukuyama, Hiroshima Pref., 721-0956, Japan
TEL: +81-84-981-3160 FAX: +81-84-981-3170

<http://www.jfe-plr.co.jp>